

# The 23<sup>rd</sup> International Students Summit on Food, Agriculture and Environment (ISS)

*“Youth Actions and Collaboration towards Resilient Food Systems and Environmental Conservation”*

## Program Book



Place: Tokyo University of Agriculture, Setagaya Campus

Access: <https://www.nodai.ac.jp/english/access/setagaya/>

---

## Table of content

---

● ISS Participants and Topics .....	2
● Overall ISS Schedule and Venue .....	3
● First gathering and ISS Sessions Rehearsal.....	4
● ISS Opening Program.....	5
● Group Discussion Sessions.....	6
● General Discussion Session.....	7
● High school Poster Presentation & English Café.....	8
● ISS Closing Program.....	9
● Meals during ISS Week.....	10
● Getting around Setagaya Campus.....	11
● Map of Setagaya Campus.....	12

# ISS Participants and Topics

Gender	Group name	Participants	ISS Title	University	Chairpersons	ISS Discussion starting time
F	GROUP A [Sustainable Solutions, Youth Innovations]	Annabelle LIAO	Embedding Sustainable and Equity-Driven Food Systems in Vancouver Using Collaboration , Youth Leadership, and The University of British Columbia as a Launchpad	The University of British Columbia	1. Zinsou Chungwon Fructueux 2. Ebisawa Sumire	August. 1, Thu. 10:40~12:10 (Japan time)
F		Nimthara Heshani Witharana	Sustaining Cascaded Tank Systems in Sri Lanka: Mobilizing Youth to Take Initiatives in Conserving the Habitats and Biodiversity for Safeguarding the Livelihood System	University of Peradeniya		
M		Beny John Mwamhanga	Advancing climate-Smart livestock farming in Tanzania: The Use of Mnyama Check Digital Platform Integrated with Sensor Technology for Monitoring, Adaptation and Sustainable Livestock Production	Sokoine University of Agriculture		
M		Jeanne Loise S. Pempeña	Youth-Based Recommendations for Upcycling Community Food Wastes into Sustainable Agricultural Inputs	University of the Philippines Los Baños		
M	GROUP B [Thinking Globally while Acting Locally to Nurture the Planet]	Mário Davi Coutinho SANTOS	Characterization of Organic Solid Waste from Production Chains of Para State Economy with an Aim to Propose Efficient Reuse Solutions	Federal Rural University of Amazon	1. Andrew Agrey Abiya 2. Laura Lee Zi Lyn	August. 1, Thu.. 13:00~14:30 (Japan time)
F		Faith Wangui ISIKA	Utilizing Frass from Black Soldier Fly Larvae as Fertilizer to Enhance Soil Fertility and Promote Sustainability in Agriculture and Environmental Management.	Jomo Kenyatta University of Agriculture and Technology		
M		Naoki Kato	Protecting the Biodiversity: A Study of Marine Debris in Mangroves	Tokyo University of Agriculture		
F		Yi Xuan Liu	Research on Consumers' Purchase Behavior of Agricultural Products in Taiwan Farmer Associations on Live-Streaming	National Chung Hsing University		
M	GROUP C [Towards a Better Tomorrow]	Peter Oguda OKECH	Effect of Different Fermentation Methods on Nutritional Value and Alkaloid Content of Slenderleaf Vegetables (Crotalaria brevifolius)	Jomo Kenyatta University of Agriculture and Technology	1. Kazuma Matsuo 2. Phyoee Su Su Kyaw	August. 1, Thu. 14:40~16:10 (Japan time)
F		Di Matteo Margot	Champ d'Innovation At School: Fostering Dialogue and Collaboration For Sustainable Agriculture	UniLaSalle		
F		Chanyaorn Panrat	Youth Awareness and Action on Environmental Conservation	Kasetsart University		
F		Sarita Shrestha	Cultivating Change: Youth-Led Sustainability Initiatives in Tikapur, Nepal	Agriculture and Forestry University		
F	GROUP D [Unity for our vitality]	Chepkoech, Emma	Dragon Fruit Revolution: Empowering Youth for Sustainable Food Systems and Environmental Conservation	Jomo Kenyatta University of Agriculture and Technology	1. Marwa Moilid Aboubaker 2. Hideaki Miyagi	August. 1, Thu. 16:30~17:50 (Japan time)
M		Phetsavanh Songvilay	Establishment of Non-Timber Forest Products Reserve Area: Research Study to Ensure Sustainable Food Security in Laos.	National University of Laos		
F		Sofia YEMETS	The Impact of University Life on Students' Food Choices: An Examination of Eating Habits and Influences	University of Reading		
M		Limkang Eang	Histamine Reduction in Prahook (Fermented Fish Paste) Production	Royal University of Agriculture		
F	GROUP E [Eco-friendly Innovation for a Sustainable Tomorrow]	Idleh, Ayah Osman	Preservation of Mangroves in Djibouti: Study on the Impact of Anthropogenic Pollution on the Growth and Photosynthetic Efficiency of Rhizophora mucronata in the Douda-Damerjog Mangrove and Sustainable Management Strategies	University of Djibouti	1. Martha Deogratias Hilary 2. Tashiro Akitaka	August. 2, Fri. 9:00~10:30 (Japan time)
M		Raymond Gabriel SEMINDU	Enhancing Maize Productivity through Biopesticide Mixture: Evaluating the Efficacy of Palm Oil, Tobacco and Neem Leaf Extracts against Fall Armyworm (Faw) Infestation in Mkease, Morogoro Region, Tanzania	Sokoine University of Agriculture		
F		Nattarika, Jitfour, et. al.	Development of Bio-products to Enhance Growth Promoting and Disease Control of Economic Plants	Thammasat University		
F		Enerel Ser Od	The Way of Opportunities to Reduce, Reuse and Recycling Food Wastes in Mongolia	Mongolian University of Life Sciences		
F	GROUP F [Empowering Communities through Sustainable Practices]	Tannu	Resource Optimization: Innovative Strategies for Straw Management	CCS Haryana Agricultural University, Hisar	1. Ayoubu Williadi Mtagawa 2. Yuki Sawai	August. 2, Fri. 10:40 ~ 12:10 (Japan time)
M		John Kinyanjui Wanjira	Improving Food Security through Increasing Productivity of Chicken	Jomo Kenyatta University of Agriculture and Technology		
M		José Renato Schmidt DE CARVALHO	Sharing Actions: The Human Element in a Sustainable Journey	University of São Paulo		
F		Martha David Biseko	The Challenge of Limited Availability and Variety of Food Options on University Campuses	Sokoine University of Agriculture		
F		Mai Mochizuki	Tea Matters: Student Cultivating Change in the Japanese Tea Industry through the Matcha Project.	Tokyo University of Agriculture		
F	GROUP G [Education and Actions towards Sustainability]	Elizabeth Marie Babcock	Utilizing Arts-Based Education to Create Resilient Food Systems	Michigan State University	1. Kabuga Norah Gakii 2. Nao Hayashi	August. 2, Fri. 13:00 ~ 14:30 (Japan time)
F		Miyuri Takahashi	The Role of Students in Creating a Sustainable Cacao Industry	Tokyo University of Agriculture		
F		Lilian Marsellian Kway	Enhancing Food and Nutrition Security through Promotion of Underutilized Indigenous African Leafy Vegetables	Sokoine University of Agriculture		
M		Andi Mahatir Nur Tasrih	StayedLocal: Advocacy Program for Integrating Local Food Supply Distribution to Strengthen Food Independence and Sustainable Business Practices in South Tangerang	IPB University		
			GENERAL DISCUSSION		NEXT THEME DISCUSSION	
			Orujov Oruj		Orujov Oruj	
		GENERAL CHAIRPERSONS	Hiroki Sato		Hiroki Sato	
			Yuki Sawai		Yuki Sawai	

## Overall ISS Schedule and Venue

Date	Activity	Time	Place/Venue
<b>July 30</b>	Arrival day		
<b>July 31</b>	First gathering and ISS sessions rehearsal	10:00 ~	International Center 2F, Conference Room
<b>August 1</b>	Opening and Keynote Speech * *	9:00 ~ 10:30	International Center 2F, Enomoto Hall
	Group Discussion * *	10:40 ~ 18:00	International Center 2F, Enomoto Hall
<b>August 2</b>	Group Discussion * *	9:00 ~ 14:30	International Center 2F, Enomoto Hall
	Workshop (with coffee break)	15:00 ~ 18:00	International Center 2F, Conference Room
<b>August 3</b>	General Discussion * *	10:00 ~ 11:30	International Center 2F, Enomoto Hall
	High school poster presentations	13:30 ~ 14:15	International Center 2F, Enomoto Hall
	English Café	14:20 ~ 15:00	International Center 2F, Enomoto Hall
	Closing ceremony * *	15:30 ~ 16:30	International Center 2F, Enomoto Hall
	Reception party	17:00 ~ 19:00	Suzushiro Restaurant
<b>August 4</b>	Departure preparations	Free	
<b>August 5</b>	Departure		

\* \* The session will be broadcasted LIVE in Microsoft Teams and the recorded session will be available in the ISS You-tube channel.

Join us in Teams: <http://tiny.cc/Nodai-ISS-2024> or use the QR code below to join the webinar



---

## July 31: First Gathering and ISS sessions Rehearsal

Place: International Center 2F, Conference Room

Meeting Time: 9: 50(Japan Time)

---

**First Gathering session. Starting time: 10:00 ~ 11:00**

**All Participants gather at International Center 2F, Conference Room**

---

**Group based first gathering session: Starting time: 11:00~12:00**

<b>Group</b>	<b>Venue</b>
<b>Group A</b>	Conference Room
<b>Group B</b>	Conference Room
<b>Group C</b>	Conference Room
<b>Group D</b>	Conference Room
<b>Group E</b>	Conference Room
<b>Group F</b>	Conference Room
<b>Group G</b>	Conference Room

**Lunch Time: 12:00 ~13:00**

**ISS Group Sessions' Rehearsal. Starting Time: 13:15**

**Venue: Enomoto Hall**

<b>Group</b>	<b>Rehearsal Time</b>
<b>Group A</b>	13:15 ~13:45
<b>Group B</b>	13:45 ~14:15
<b>Group C</b>	14:15 ~14:45
<b>Group D</b>	14:45 ~ 15:15
<b>Group E</b>	15:15 ~ 15:45
<b>Group F</b>	15:45 ~ 16:15
<b>Group G</b>	16:15 ~ 16:45

---

## August 1: 23<sup>rd</sup> ISS Opening Program

Place: International Center 2F, Enomoto Hall

Meeting time: 8:45 (Japan Standard Time)

---

Time	Content	Description
9:00 ~ 9:10	Opening remarks	Prof. Dr. Fumio EGUCHI (President, Tokyo University of Agriculture)
9:10~9:50	<b>Keynote Speech</b> Title: <b>Work in International Agricultural Organization</b>	Prof. Dr. Hironobu SHIWACHI (Professor, Department of International Agricultural Development and Former director, Center for Global Initiatives)
9:50~9:55	Echoes of Insight: Advisors and Alumni speak	Recorded ISS Video
9:55 ~ 10:10	Message from ISS 2023 Award Winners	Recorded Video
10:10 ~ 10:15	Greetings from ISS Advisors Committee	Prof. Dr. Salvador CATELO (Chairman, ISS Advisors Committee)
10:15 ~ 10:20	<b>Remarks for the next 24<sup>th</sup> ISS, 2025</b>	Prof. Arif Satria (Rector, IPB University)
10:20~ 10: 25	Way forward	ISS General Chairpersons
10:25 ~10: 30	Closing Statement	Prof. Dr. Machito MIHARA (Director, Center for Global Initiatives)

Join us in Teams: <http://tiny.cc/Nodai-ISS-2024> or use the QR code below to join the webinar



---

## Group Discussion sessions

Place: International Center 2F, Enomoto Hall

---

Date	Sessions	Session time	Group Theme
August 1 Thursday	Group A	10:40 ~ 12:10	Sustainable Solutions, Youth Innovations
	Lunch break	12:10~13:00	
	Group B	13:00 ~14:30	Thinking Globally while Acting Locally to Nurture the Planet
	Group C	14:40 ~ 16:10	Towards a Better Tomorrow
	Coffee break	16:10 ~ 16:30	
	Group D	16:30 ~ 18:00	Unity for our vitality
August 2 Friday	Meeting time: 8:45 at International Center 2F, Enomoto hall		
	Group E	9:00 ~ 10:30	Eco-friendly Innovation for a Sustainable Tomorrow
	Group F	10:40 ~ 12:10	Empowering Communities through Sustainable Practices
	Lunch break	12:10~13:00	
	Group G	13:00 ~ 14:30	Education and Actions towards Sustainability
	Coffee Break	14:30 ~14:50	

### August 2, ISS Workshop. Starting time: 15:00

#### ➤ ISS Workshop: Reflecting on the Group Discussion Sessions

NOTE: Right after the Coffee Break, all ISS Groups (Presenters and Chairpersons) shall gather at the **Conference Room** for ISS Workshop.

- Each group shall explain (in short) their group conclusions and recommendations
- Each group shall come up with 2 keywords related to their conclusions and recommendations
- We shall have our general conclusion and recommendation from which the next ISS theme shall be formulated

#Join us in Teams: <http://tiny.cc/Nodai-ISS-2024> or use the QR code below to join the webinar



---

## August 3: General Discussion session

Place: International Center, 2F, Enomoto Hall

Meeting Time: 9:45

---

August 3rd, 2024. Starting from 10:00 a.m. (Japan Standard Time)

Time	Content	Description
10:00 ~ 10:10	<ul style="list-style-type: none"><li>● Opening remarks</li><li>● Introducing Group Representatives</li></ul>	Moderator: General Chairperson, Orujov Oruj
10:10~10:20	<ul style="list-style-type: none"><li>● @Group Conclusions</li></ul>	<b>@Group Chairpersons</b> Moderators: All General Chairpersons
10:20~10:40	Group Recommendations	<b>@Group Presenters (Representatives)</b> Moderator: General Chairperson, Orujov Oruj
10:40 ~ 11:00	Panel Discussion	All ISS Participants (Including the Physical and Online Audience)  <b>Moderators:</b> <ul style="list-style-type: none"><li>● General Chairperson, Orujov Oruj</li><li>● General Chairperson, Hiroki Sato</li></ul>
11:00 ~ 11:05	Next ISS Main Theme Announcement	General Chairperson, Orujov Oruj
11:05~ 11: 25	General Discussion	Moderator: General Chairperson Sawai Yuki
11:25 ~11:30	Closing remarks	General Chairperson, Hiroki Sato

Join us in Teams: <http://tiny.cc/Nodai-ISS-2024> or use the QR code below to join the webinar



---

## August 3: High School Poster Presentation and English Café Session

Place: International Center 2F, Enomoto Hall

Time: 13:30 ~ 14:15 / 14:20 ~15:00

---

- This is part of ISS sessions; all ISS participants are required to attend the session.
  - Participate by listening to the presentations and engaging in the Q&A session
  - Please use simple and easy-to-understand English when asking questions
- 

High School Name	Presenters	Presentation Title	ISS Group in-charge
Senior High School at Sakado, University of Tsukuba	Yuto Kawano	The Effect of Agricultural Experience on Children's Food and Health Awareness: A Trial of Growing Bitter Melon	G
Senior High School at Sakado, University of Tsukuba	Soichi Kondo	Research on Japanese Traditional Food that Utilizes Vegetable Waste in the Suburbs of Tokyo	Hiroki Sato
Yamawaki Junior & Senior High School	Juri Ohya, Anju Motegi,	An Environment Friendly Way to Eliminate Weeds ~Coffee Grounds Have the Ability to Eliminate Weeds~	A
Yamawaki Junior & Senior High School	Yuu Sugimoto, Hinano Sasaoka	Are There Microplastics in Commercial Seafood?	C
The First High School, Tokyo University of Agriculture	Nana Kawade, Aoi Muto, Tomoha Yoshida, Azusa Koyama, Hikaru Nakase	The Future of Food Security	E
The first high school, Tokyo University of Agriculture	Mizuki Inoue, Haruno Ogawa, Manari Watamoto,	Adapting International Strategies for Food Loss and Waste Reduction in Japan	Orujov Oruj
The Second High School,Tokyo University of Agriculture	Lisa Yuasa, Nico Tadokoro, Rina Iwasaki, Takeru Ichikawa	Seabirds and Plastic Trash	B
The Second High School,Tokyo University of Agriculture	Shimizu Towa, Shimada Aimi, Takahashi Aiko, Hashimoto Yumi	NO DAICON NO LIFE	D
The Third Highschool, Tokyo University of Agriculture	Matsuoka Akane, Hiraki Mei	"SDGs and Health: How High School Students Can Make a Difference"	F



## 23<sup>rd</sup> ISS Closing Program

**August 3<sup>rd</sup>, 2024. Starting from 15:30 (Japan Standard Time)**

Time	Content	Description
15:30 ~ 15:35	Remarks	Prof. Dr. Machito MIHARA (Director, Center for Global Initiatives)
15:35~15:50	Certificates of Completion	Prof. Dr. Machito MIHARA (Director, Center for Global Initiatives)
15:50~15:55	ISS Awards	Prof. Dr. Salvador CATELO (Chairman, ISS Advisors Committee)
15:55 ~ 16:00	The trajectory of the next ISS	Puji Mudiana, SP, MA (Director for International Education, IPB University)
16:00 ~ 16:10	A word from representatives (Advisors from partner universities)	Dr. Nsenga, Dr. Naomi, Dr. Chuaboon, Ms. Sutthisri
16:10 ~ 16:12	Remarks	ISS General Chairpersons
16:12 ~16:15	Closing Statement	Prof. Dr. Rie MIYURA (Deputy director, Center for Global Initiatives)
16:15 ~16:30	Group Photo	All Participants
16:45 ~ 17:00	Cheer Club Performance	In front of Suzushiro Restaurant
17:00 ~19:00	Farewell Party	At Suzushiro Restaurant

Join us in Teams: <http://tiny.cc/Nodai-ISS-2024> or use the QR code below to join the webinar



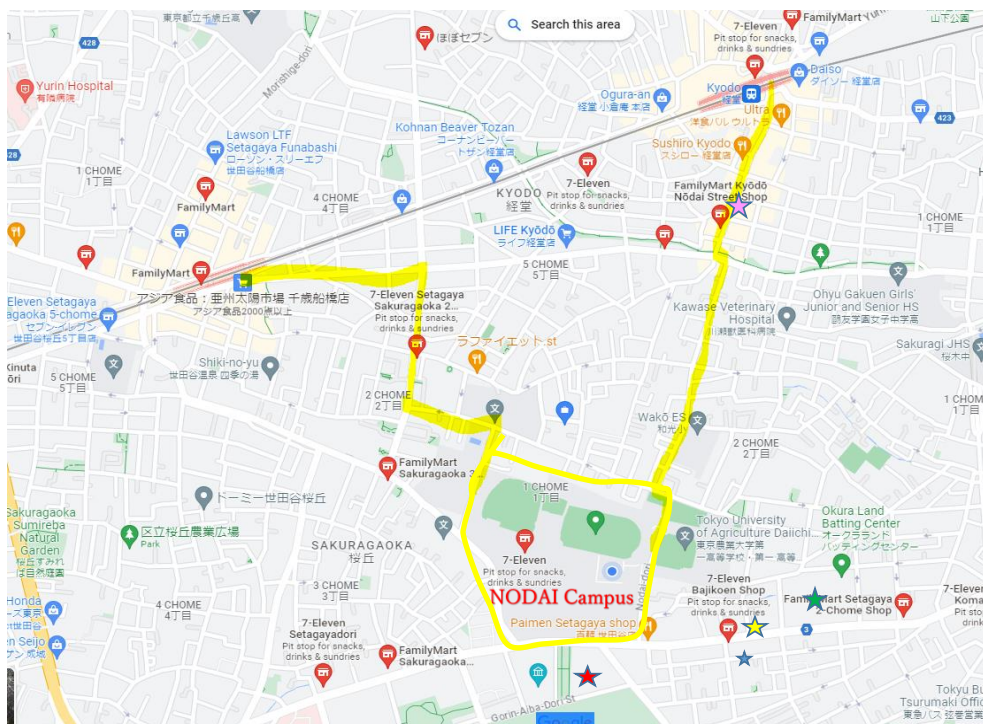
## Meals during ISS Week

Meals during ISS Week			
Date	Meal	Time	Place
July 29 (night Arrivals)	Dinner will not be provided		
July 30	Breakfast	7:30~8:30	Suzushiro Restaurant
	Lunch will not be provided		
	Dinner will not be provided		
July 31	Breakfast	8:30~9:30	Suzushiro Restaurant
	Lunch	12:00~13:00	Green Restaurant
	Dinner will not be provided		
August 1	Breakfast	7:30~8:30	Suzushiro Restaurant
	Lunch (Lunch box)	12:10~13:00	International Center, Conference room 2
	Refereshment	16:20 ~ 17:00	International Center 2F Lobby
	Dinner will not be provided		
August 2	Breakfast	7:30-8:30	Suzushiro Restaurant
	Lunch (Lunch box)	12:10-13:00	International Center, Conference room 2
	Refreshment	14:30-15:00	International Center 2F Lobby
	Dinner (Lunch box)	18:00-19:00	International Center, Conference room 2
August 3	Breakfast	7:30-8:30	Suzushiro Restaurant
	Lunch (Lunch box)	12:00-13:00	International Center, Conference room 2
	English Café	14:20 ~ 14:50	International Center, Enomoto Hall
	Farewell Party	17:00-19:00	Suzushiro Restaurant
August 4	Breakfast	7:30 ~ 8:30	Suzushiro Restaurant
	Lunch will not be provided		
	Dinner will not be provided		
August 5	Breakfast	7:30 ~ 8:30	Suzushiro Restaurant
	For early departure	5:00	Light meal

## Getting around Setagaya Campus

### GETTING AROUND TOKYO NODAI

Map around Tokyo NODAI - Roads to the stations, 20 minutes either to Kyodo station and Chitose-Funabashi station



#### Convenience Stores

You can withdraw JPY from ATMs and buy snacks at convenience stores (7-eleven or Familymalt). The nearest convenience store outside NODAI, opens from 6:00 to midnight

#### ★ Truha Drug

Opens from 9:00 to 22:00, located in front of the NODAI main gate, selling snacks as well!

#### ★ Kotobuki Coin Laundry

Opens 24h, located a few blocks from NODAI (3-33-6 Sakura, Setagaya)

#### ★ Summit Super market

Opens from 9:00 to 23:00

#### ★ Halal food store, SpiceWALA

Opens from 10:30 to 23:00, about 10mins walk from NODAI, on the way to the Kyodo station (1-6-10 Kyodo, Setagaya)

#### ★ Guest House

3-9-5 Sakura, Setagaya

## Open Hour

Cafeteria Suzushiro

Lunch hour 11:00-14:00

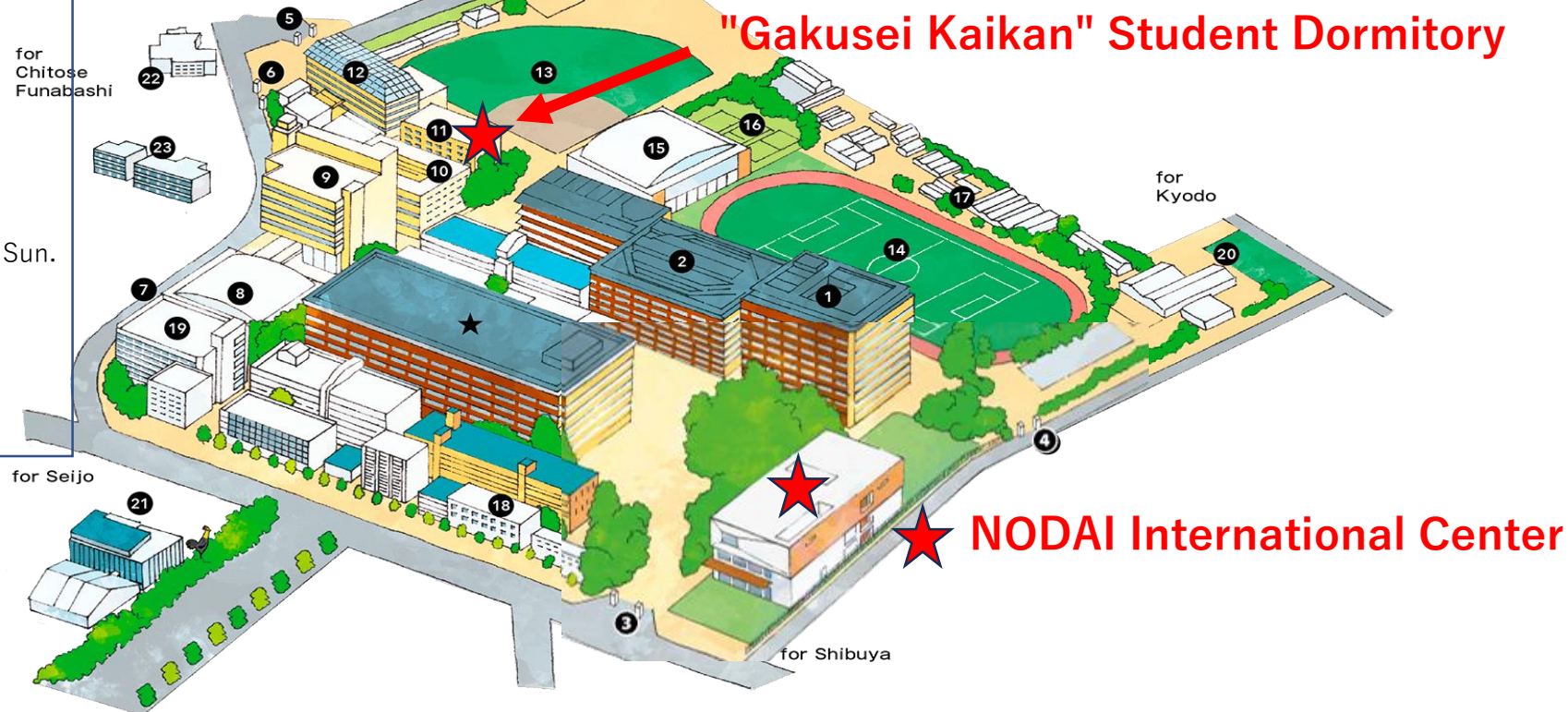
NODAI CO-OP

Open 10:30-15:00

7-Eleven

Open 8:00-18:00(July22-Aug6) except for Sun.

# Campus Map



You can withdraw JPY from ATMs at 7-Eleven



VISA

PLUS

MasterCard

moestro

cirrus

UnionPay

AMERICAN EXPRESS

JCB

DISCOVER

Diners Club INTERNATIONAL

★ **NODAI Science Port**  
(Research Laboratories Building)

① **NODAI Academia Center**  
(Main Library, Administration and University Offices)  
Admissions center on 1st floor.

② **Bldg. 1**  
(Lecture Halls)

③ **Main Gate**

④ **Kyodo Gate**

⑤ **Chitose Gate**

⑥ **Sakuragaoka Gate**

⑦ **Youga Gate**

⑧ **Centennial Hall**  
Cafeteria "Green"

⑨ **Bldg. 18**  
Cafeteria "Suzushiro"

⑩ **Tokiwamatsu Student Main Hall**  
(Alumni Rooms, NODAI CO-OP, 7-Eleven,

⑪ **Tokiwamatsu Student Hall**  
(Club Rooms)

⑫ **Tokiwamatsu Hall Dojo**

⑬ **Baseball Field**

⑭ **Athletic Field**

⑮ **Sakuragaoka Arena**  
(Gymnasium, Training Room)

⑯ **Tennis Courts**

⑰ **Greenhouses**

⑱ **Bldg. 16**  
(Health and Wellness Center)

⑲ **Bldg. 12**  
(Food Processing Center)

⑳ **Hockey Field**

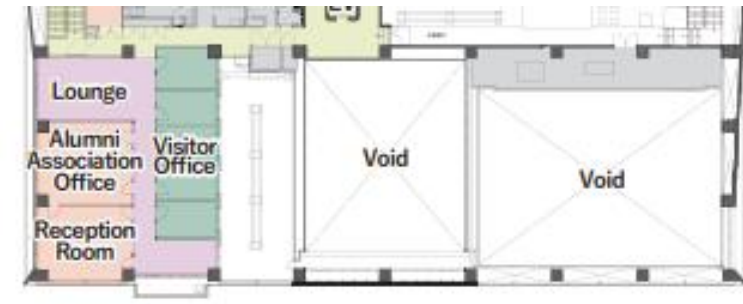
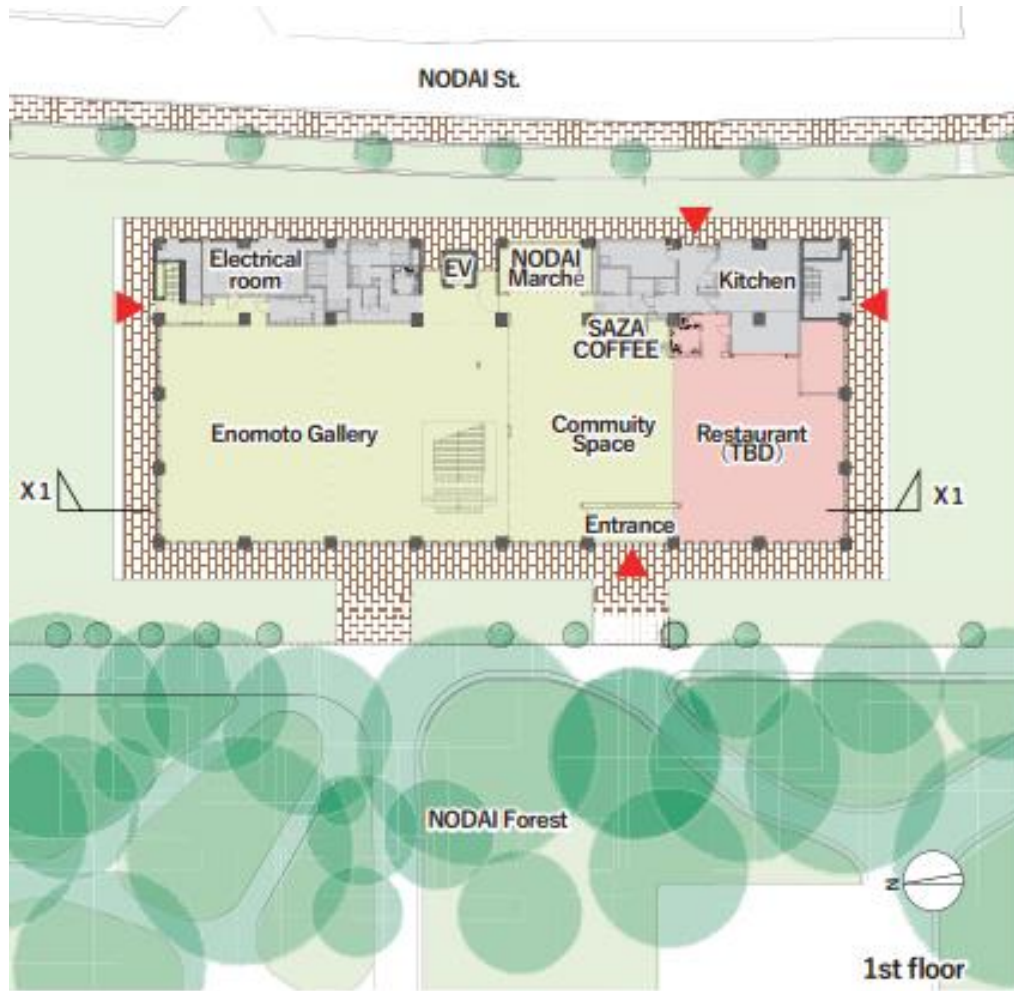
㉑ **Food and Agriculture Museum · Biorium · Cafe "egg"**

㉒ **Green Academy Hall**  
(Life long Education)

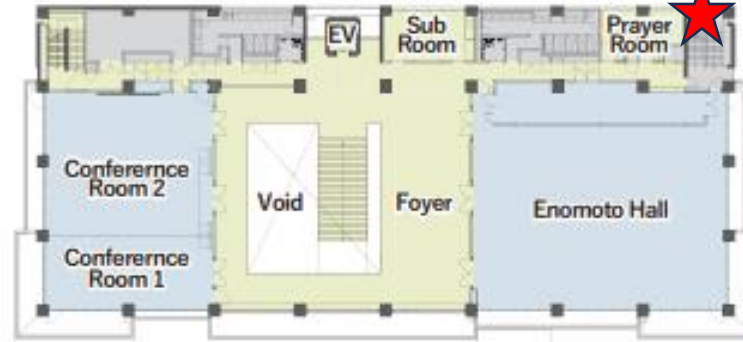
㉓ **Sakuragaoka Dormitory, Wakakusa Dormitory**



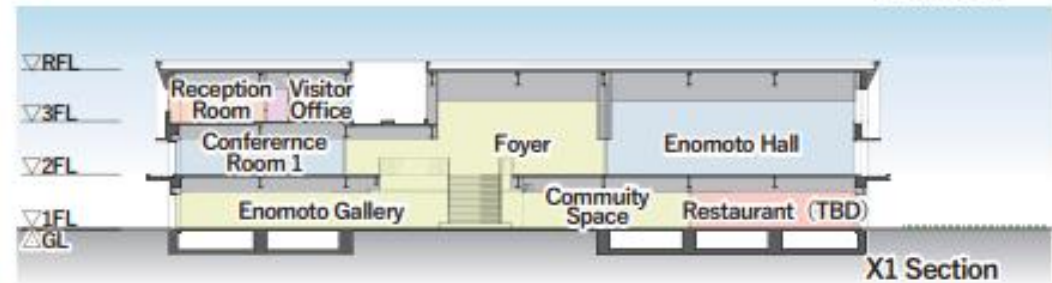
# NODAI International Center Floor Map



3rd floor



2nd floor



X1 Section

Prayer Room